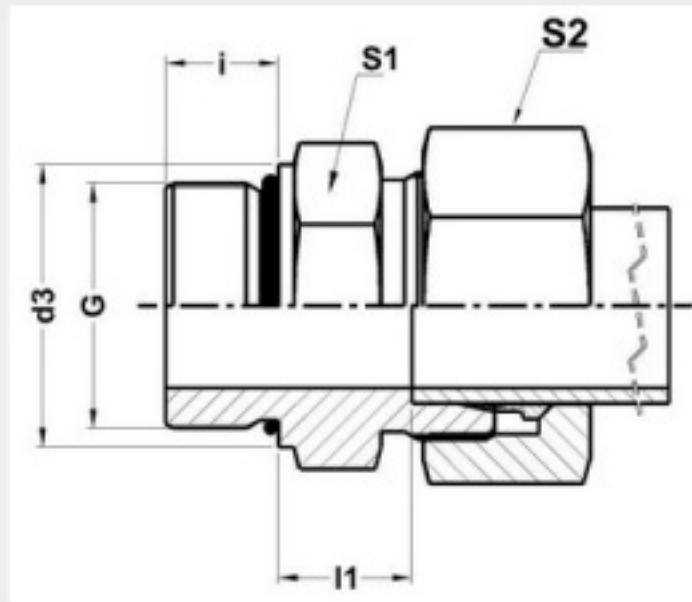


METRIC BITE TYPE FITTINGS

GE-UNF/UN- STRAIGHT MALE STUD COUPLING

Male Stud Threads: UN/UNF with 'O' Ring Sealing



ORIENT ENGINEERING WORKS

Part No.	Series	Tube OD	G	d3	i	l1	S1	S2	O' Ring
GE 08-LR-7/16-20 UNF	Light-250 Bar	8	7/16-20 UNF	14.4	9	10	17	17	8.92 X 1.83
GE 10-LR-7/16-20 UNF	Light-250 Bar	10	7/16-20 UNF	14.4	9	11	17	19	8.92 X 1.83
GE 12-LR-9/16-18 UNF	Light-250 Bar	12	9/16-18 UNF	17.6	10	11	19	22	11.9 X 1.98
GE 12-LR-3/4-16 UNF	Light-250 Bar	12	3/4-16 UNF	22.3	11	13	24	22	16.36 X 2.2
GE 12-LR-7/8-14 UNF	Light-250 Bar	12	7/8-14 UNF	25.5	12.7	14.3	27	22	19.18 X 2.46
GE 15-LR-3/4-16 UNF	Light-250 Bar	15	3/4-16 UNF	22.3	11	14	24	27	16.36 X 2.2
GE 18-LR-3/4-16 UNF	Light-160 Bar	18	3/4-16 UNF	22.3	11	14	27	32	16.36 X 2.2
GE 18-LR-7/8-14 UNF	Light-160 Bar	18	7/8-14 UNF	25.5	12.7	14.8	27	32	19.18 X 2.46
GE 22-LR-7/8-14 UNF	Light-160 Bar	22	7/8-14 UNF	25.5	12.7	16.8	32	36	19.18 X 2.46
GE 22-LR-1.1/16-12 UN	Light-160 Bar	22	1.1/16-12 UN	31.9	15	16.5	32	36	23.47 X 2.95
GE 22-LR-1.5/16-12 UN	Light-160 Bar	22	1.5/16-12 UN	38.2	15	17.5	41	36	29.74 X 2.95
GE 28-LR-1.1/16-12 UN	Light-100 Bar	28	1.1/16-12 UN	31.9	15	17.5	41	41	23.47 X 2.95
GE 28-LR-1.5/16-12 UN	Light-100 Bar	28	1.5/16-12 UN	38.2	15	17.5	41	41	29.74 X 2.95
GE 35-LR-1.5/16-12 UN	Light-100 Bar	35	1.5/16-12 UN	38.2	15	17.5	46	50	29.74 X 2.95
GE 35-LR-1.5/8-12 UN	Light-100 Bar	35	1.5/8-12 UN	47.7	15	17.5	50	50	37.46 X 3